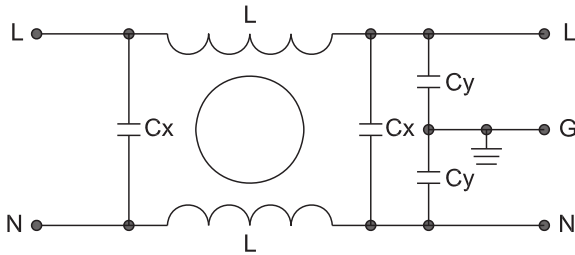


Description

- Designed for DC power line.
- Excellent differential and common-mode attenuation.
- High performance,easy to install.
- Custom design acceptable.






Electrical Schematic:

Fig 1
Typical Applications :

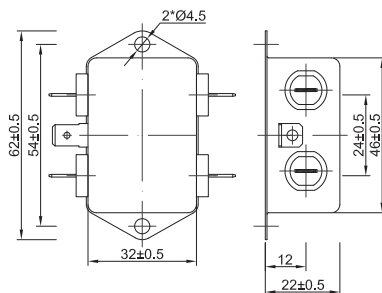
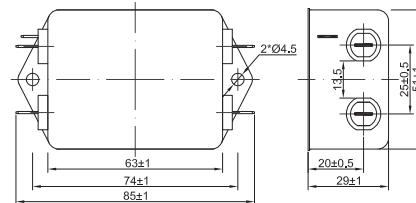
- Available for all kinds of electronic equipments and measuring instruments (DC side): switching power supply,Private Branch Exchange(PBX),data communication etc.

Specification :

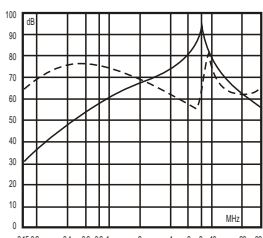
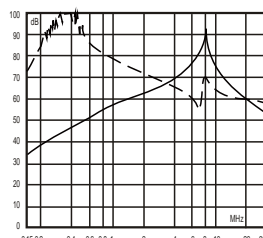
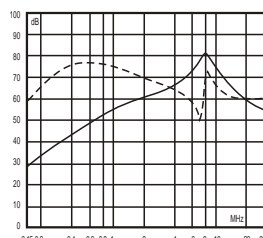
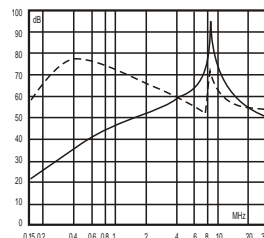
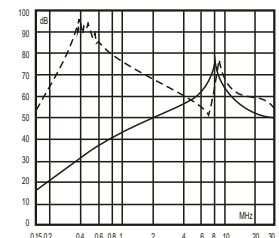
Rated Voltage:	80VDC/250VDC
Rated Current:	3A~20A
Operating Frequency:	DC
Temperature range :	HPF 25/085/21
Test Voltage (1min):	
Line to Ground:	500VDC
Line to Line:	350VDC

Data table:

MCT PN:	Rated Current: A	Rated Voltage: V	Leakage Current: mA	Input/Output connections:	Electrical Schematic:	Dimension:
MCT7DC-3-1	3	80/250	-		1	1
MCT7DC-6-1	6	80/250	-		1	1
MCT7DC-10-1	10	80/250	-		1	1
MCT7DC-16-1	16	80/250	-		1	2
MCT7DC-20-1	20	80/250	-		1	2

Dimension: unit :mm

Fig 1

Fig 2
Insertion Loss in dB:

(Measured in 50Ω system , as IEC/CISPR NO.17)

 - - - - - Differential Mode
 ——— Common Mode

3A

6A

10A

16A

20A