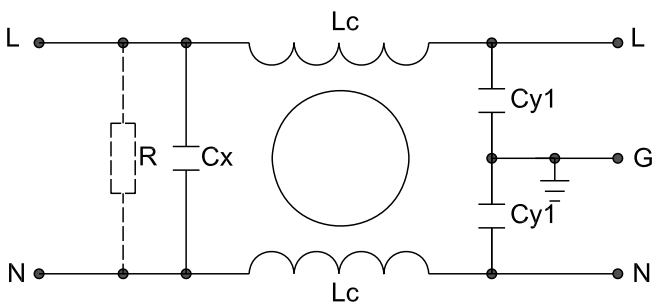


Description

- Compact unit, light weight, low price, easy to install
- Rear/front or snap-in mounting. (S and S1 type)
- High quality components ensure the safety and reliability of filters
- Optional medical versions (B type) comply with the requirements of IEC/EN 60601-1 for creepage and clearance, leakage current and high potential testing.
- Wide mounting flanges available.
- Custom design acceptable
- welcome ODM/OEM













Electrical Schematic:

Fig 1
Typical Applications :

- Single-phase power supplies, switch-mode power supplies.
- Small to medium-sized machines and household equipment.
- Portable electrical and electronic equipment.
- Test and measurement equipment.
- Medical equipment.

Specification :

Rated Voltage:	120/250VAC
Operating frequency:	50/60Hz
Rated Current:	1A~10A
Temperature range :	HPF 25/085/21
Test voltage(1min):	
Line to ground :	2000VAC
Line to Line :	1450VDC

Data table:

MCT PN:	Rated Current: A	Rated Voltage: V	Leakage Current: mA	Input/Output connections	Electrical Schematic:	Dimension
MCTAIE-1-1	1	120/250	0.5		1	23
MCTAIE--3-1	3	120/250	0.5		1	23
MCTAIE--6-1	6	120/250	0.5		1	23
MCTAIE--10-1	10	120/250	0.5		1	23
MCTAIE1-1-1	1	120/250	0.5		1	24
MCTAIE1-3-1	3	120/250	0.5		1	24
MCTAIE1--6-1	6	120/250	0.5		1	24
MCTAIE1-10-1	10	120/250	0.5		1	24
MCTAIE2-1-1	1	120/250	0.5		1	25
MCTAIE2-3-1	3	120/250	0.5		1	25
MCTAIE2-6-1	6	120/250	0.5		1	25
MCTAIE2-10-1	10	120/250	0.5		1	25

Dimension: unit :mm

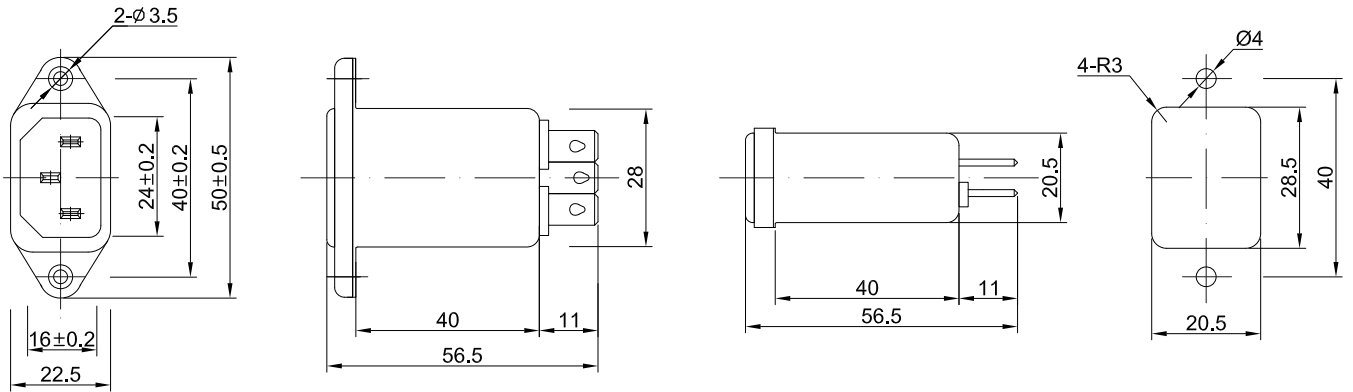


Fig 23

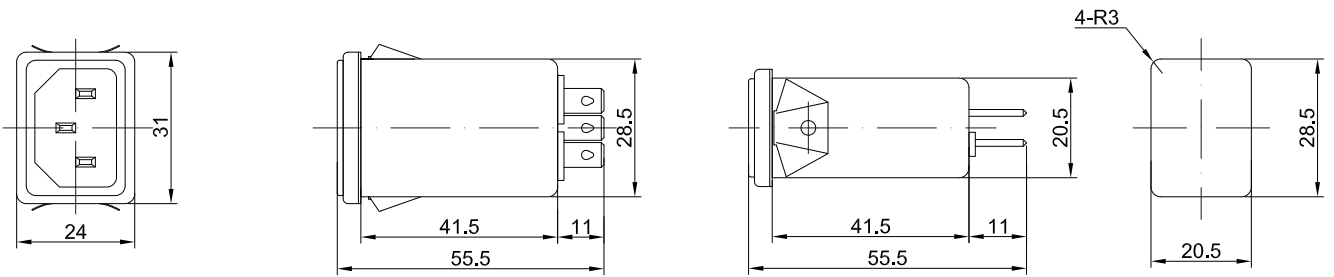


Fig 24

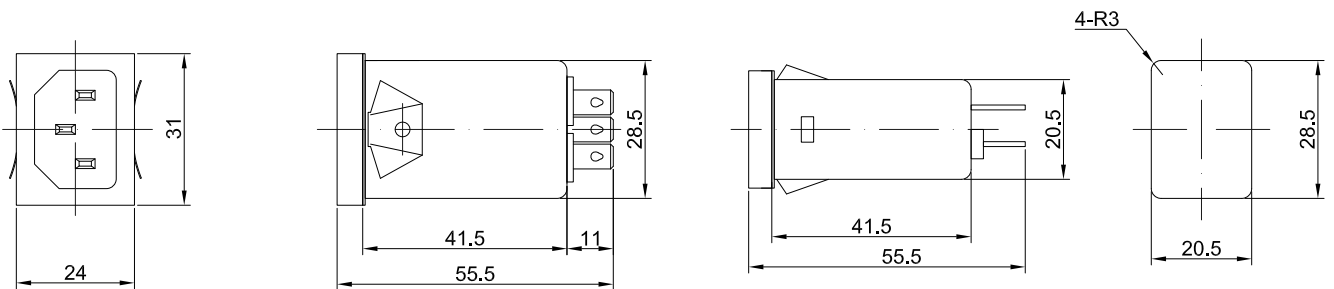
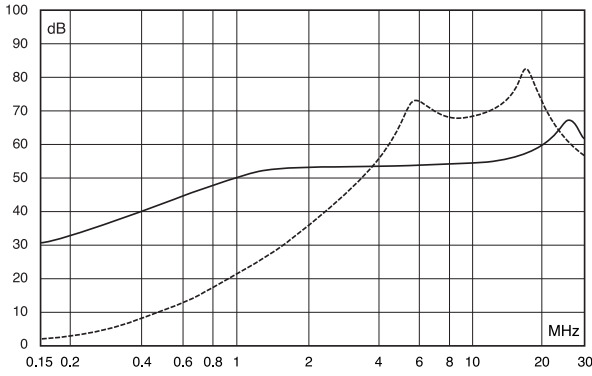


Fig 25

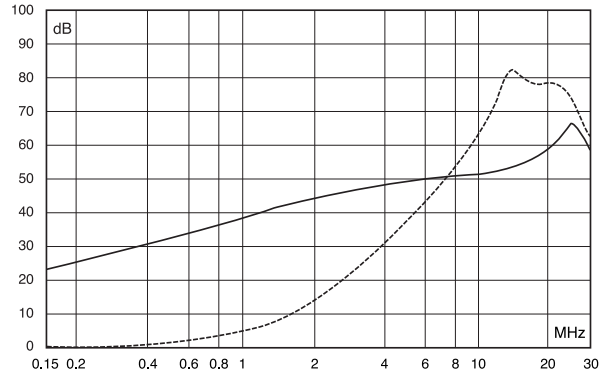
Insertion Loss in dB:

(Measured in 50Ω system, as IEC/CISPR NO.17)

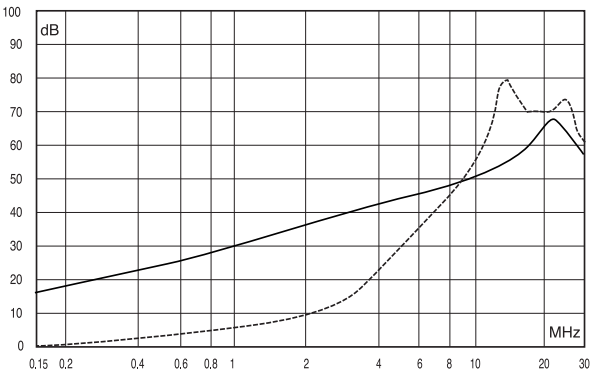
----- Differential Mode
 ————— Common Mode



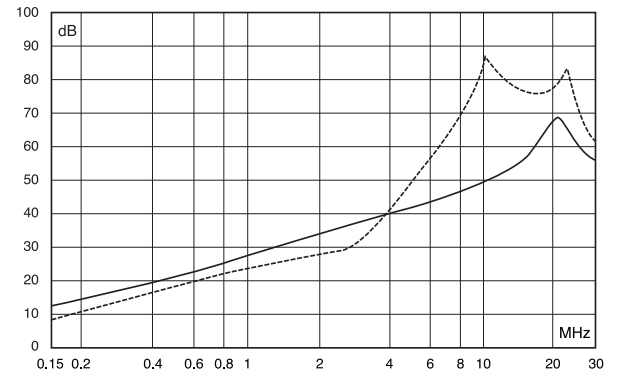
1A



3A



6A



10A