

### Description

- The MCTAIE7 power entry module combines an IEC inlet, mains filter with excellent filter attenuation and a mains switch in a small form factor.
- Rated currents up to 10A.
- Exceptional conducted attenuation performance, based on chokes with high saturation resistance and excellent thermal behavior.
- 1-pole rocker switch, not illuminated
- Welcome customized products.

### Typical Applications :

- Small to medium-sized machines and household equipment
- Portable electrical and electronic equipment
- Single-phase power supplies, switch-mode power supplies
- Test and measurement equipment

### Electrical Schematic:

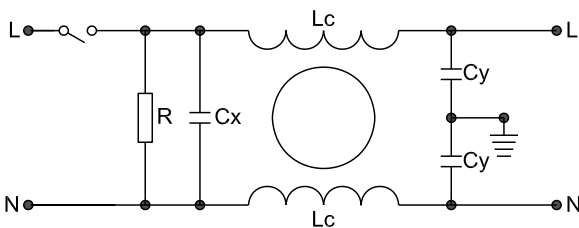


Fig 1

### Specification :

Rated Voltage:	120/250VAC
Operating frequency:	50/60Hz
Rated Current:	1A~10A
Temperature range :	HPF 25/085/21
Test voltage(1min):	
Line to ground :	2000VAC
Line to Line :	1450VDC

### Dimension: unit :mm

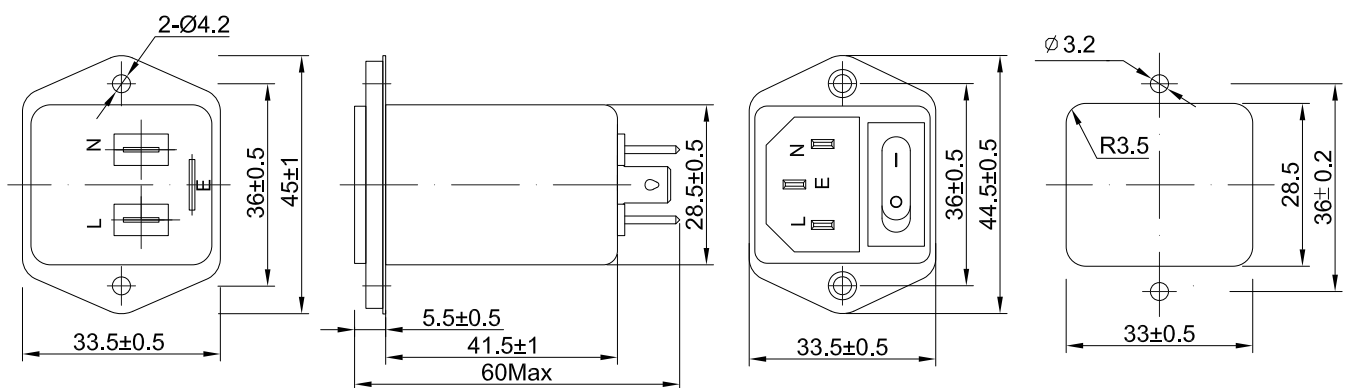




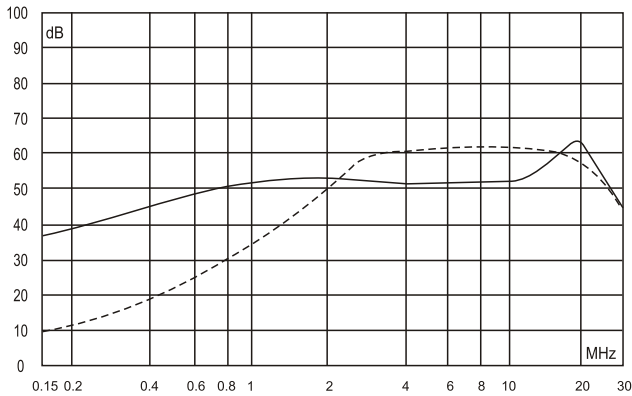


Fig 30

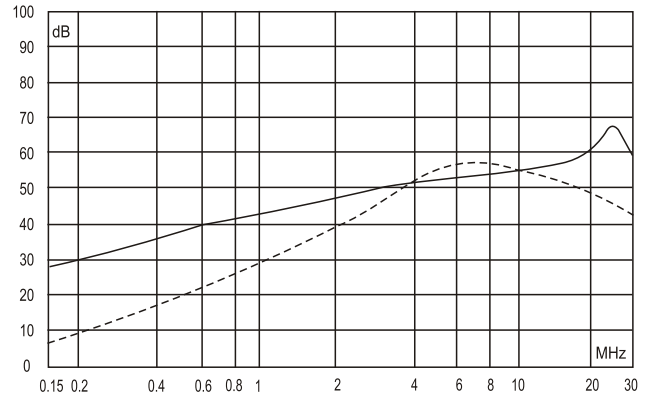
Data table:

MCT P/N:	Rated Current: A	Rated Voltage: V	Leakage Current: mA	Input/Output connections	Electrical Schematic:	Dimension
MCTAIE7-1-1	1	120/250	0.5		1	30
MCTAIE7-3-1	3	120/250	0.5		1	30
MCTAIE7-6-1	6	120/250	0.5		1	30
MCTAIE7-10-1	10	120/250	0.5		1	30

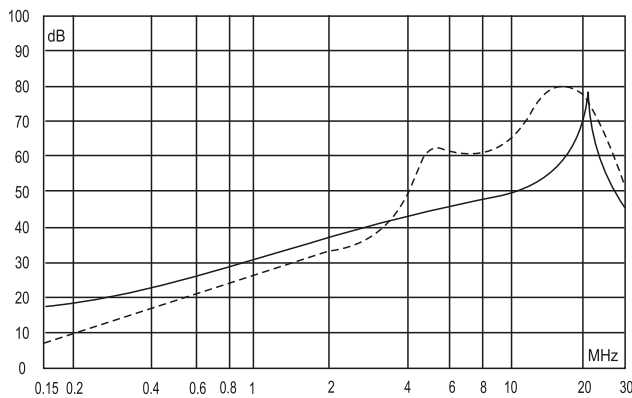
Insertion Loss in dB:



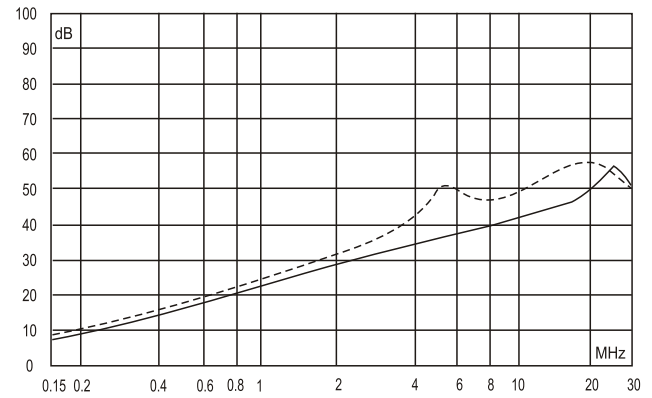
1A



3A



6A



10A