

Description

- General purpose, three phase three line filters, space-saving design Rated current from 5A to 200A
- Excellent interference suppression performance for CM and DM
- High quality components ensure the safety and reliability of filter
- Chassis mounting with various connection: fast on/screw/wire terminal
- Welcome for customized products.

Typical Applications :

- General purpose three phase filtering
- Three-phase motor drives
- Inverters and converters
- UPS and SMPS
- Industrial automation equipment

Electrical Schematic:

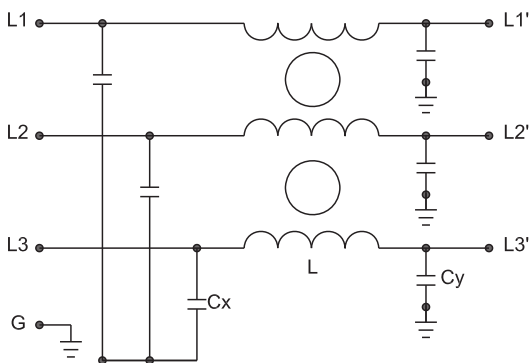


Fig 1

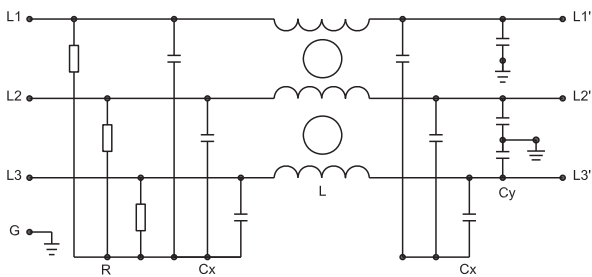
















Fig 2

Specification :

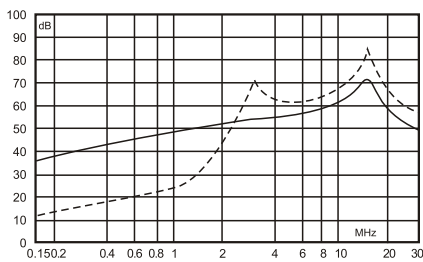
| | |
|----------------------|---------------|
| Rated Voltage: | 250/440VAC |
| Operating frequency: | 50/60Hz |
| Rated Current: | 5A~200A |
| Temperature range : | HPF 25/085/21 |
| Test voltage(1 min): | |
| Line to ground : | 2700VAC |
| Line to Line : | 1450VDC |

Data table:

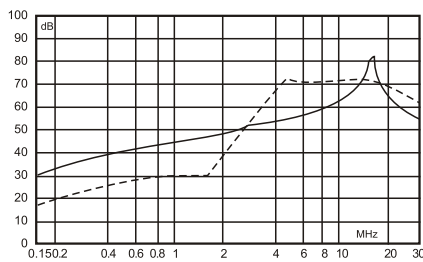
| MCT P/N: | Rated Current: A | Rated Voltage: V | Leakage Current: mA | Input/Output connections | Electrical Schematic: | Dimension |
|--------------|---------------------|---------------------|------------------------|---|--------------------------|-----------|
| MCT4T1-6-1 | 6 | 250/440 | 1.5 |  | 1 | 53 |
| MCT4T1-10-1 | 10 | 250/440 | 1.5 |  | 1 | 53 |
| MCT4T1-6-3 | 6 | 250/440 | 1.5 |  | 1 | 54 |
| MCT4T1-10-3 | 10 | 250/440 | 1.5 |  | 1 | 54 |
| MCT4T2-6-1 | 6 | 250/440 | 1.5 |  | 2 | 55 |
| MCT4T2-10-1 | 10 | 250/440 | 1.5 |  | 2 | 55 |
| MCT4T2-20-6 | 20 | 250/440 | 2.5 |  | 2 | 56 |
| MCT4T2-30-6 | 30 | 250/440 | 2.5 |  | 2 | 56 |
| MCT4T2-40-6 | 40 | 250/440 | 2.5 |  | 2 | 57 |
| MCT4T2-50-6 | 50 | 250/440 | 2.5 |  | 2 | 57 |
| MCT4T2-80-6 | 80 | 250/440 | 2.5 |  | 2 | 58 |
| MCT4T2-100-6 | 100 | 250/440 | 2.5 |  | 2 | 58 |
| MCT4T2-150-6 | 150 | 250/440 | 6.0 |  | 2 | 59 |
| MCT4T2-200-6 | 200 | 250/440 | 6.0 |  | 2 | 60 |

Insertion Loss in dB:

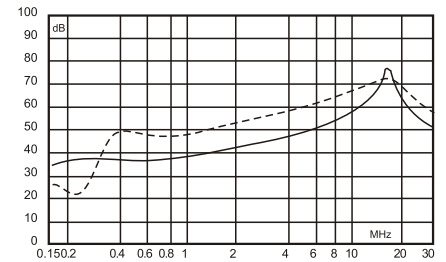
(Measured in 50Ω system , as IEC/CISPR NO.17)

 ----- Differential Mode
 ——— Common Mode


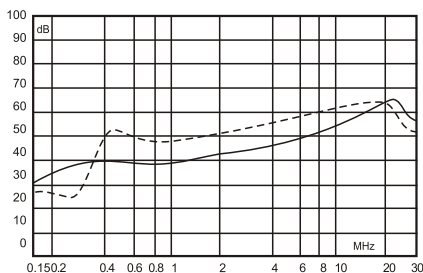
6A



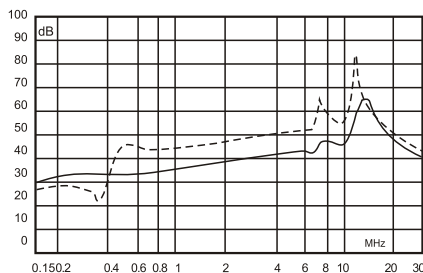
10A



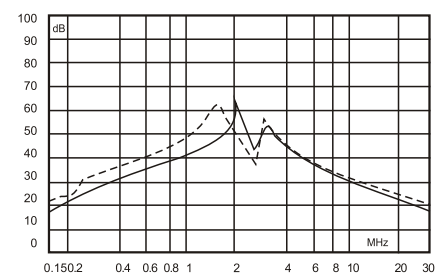
15A/20A/25A



30A



40A/50A



100A/150A/200A

Dimension: unit :mm

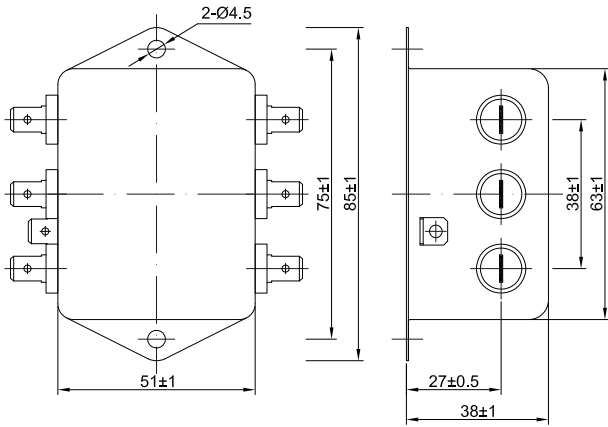


Fig 53

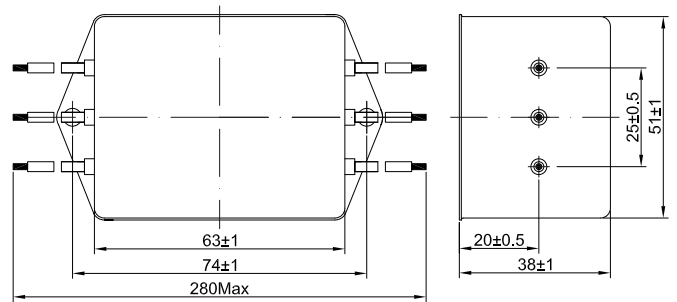


Fig 54

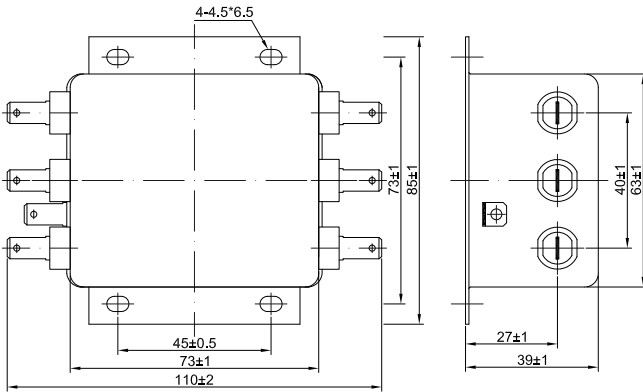


Fig 55

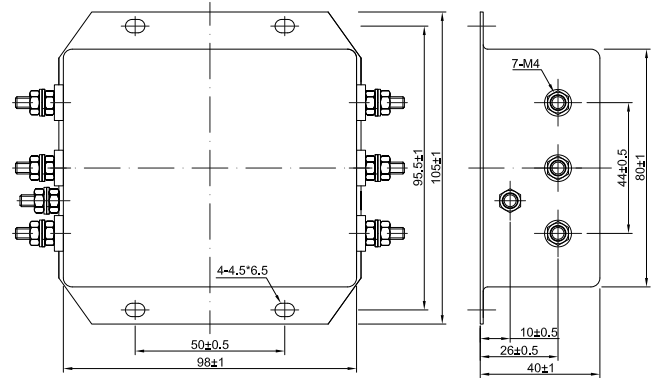


Fig 56

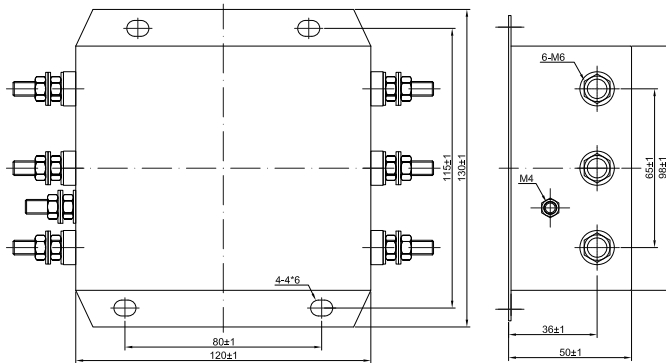


Fig 57

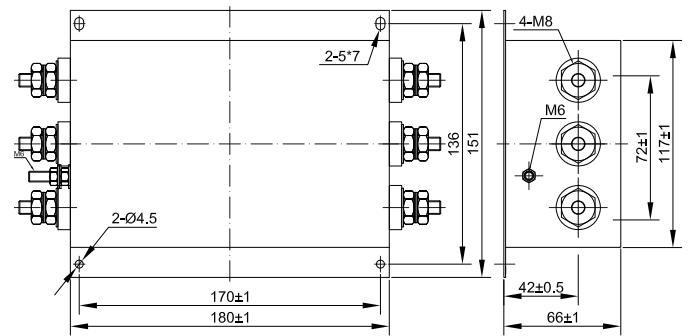


Fig 58

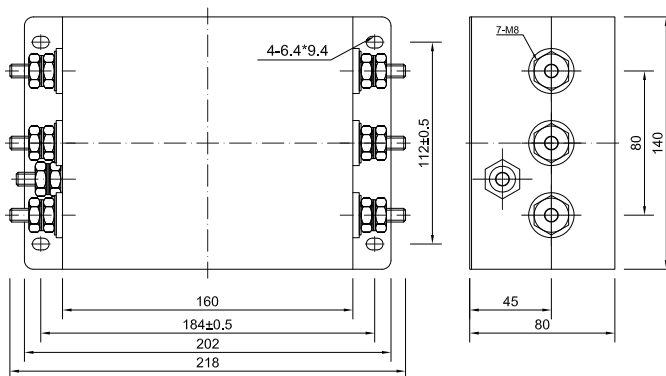


Fig 59

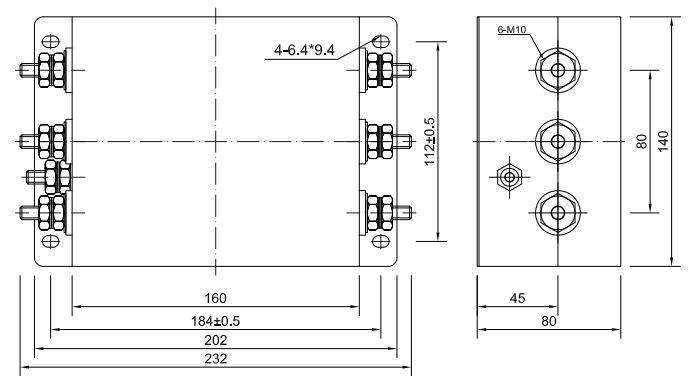


Fig 60