

EMI Suppression Filters
for AC Power Lines
MCTL25U Series Standard Winding

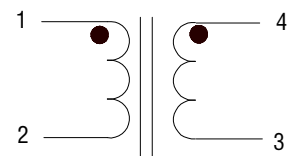
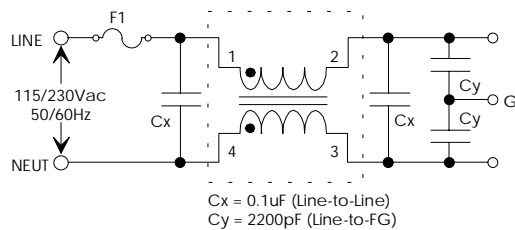
CONTENTS

Outline of EMI suppression Filter for AC Power Lines Common mode Choke coil MCTL25U Series standard winding.

1. Compact and lightweight
2. Low profile in vertical core layout
3. Both a standard winding and a sectional winding for higher frequency noise is available.
4. Rated voltage: 85~265VAC, 50/60Hz
5. Insulation resistance: 100MΩ @500VDC
6. Turns ratio: 1:1±2%
7. Hi-pot: 3750VAC/1mA/60Sec
8. Testing frequency: 1KHz/0.25V
9. Operating temperature: -40°C~+105°C

Typical electrical parameter

MCT Part No.	Inductance(mH) min	DC Resistance(Ω) max	Rated Current(A)
MCTL25U047A075	47.0	0.72	0.75
MCTL25U033A100	33.0	0.55	1.00
MCTL25U016A150	16.0	0.25	1.50
MCTL25U010A175	10.0	0.17	1.75
MCTL25U005A225	5.60	0.08	2.25
MCTL25U003A275	3.30	0.055	2.75
MCTL25U001A350	1.50	0.032	3.50



Welcome customized.
 Dimension in mm
 Tolerance: ±0.03

