

EMI Suppression Filters  
for AC Power Lines  
MCTL35U Series Standard Winding

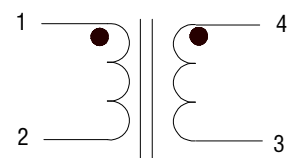
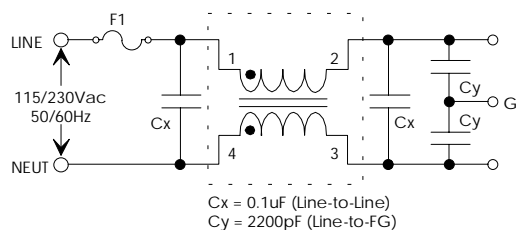
## CONTENTS

Outline of EMI suppression Filter for AC Power Lines Common mode Choke coil MCTL35U Series standard winding.

1. Compact and lightweight
2. Low profile in vertical core layout
3. Both a standard winding and a sectional winding for higher frequency noise is available.
4. Rated voltage: 85~265VAC, 50/60Hz
5. Insulation resistance: 100MΩ @500VDC
6. Turns ratio: 1:1±2%
7. Hi-pot: 3750VAC/1mA/60Sec
8. Testing frequency: 1KHz/0.25V
9. Operating temperature: -40°C~+105°C

### Typical electrical parameter

MCT Part No.	Inductance(mH) min	DC Resistance(Ω) max	Rated Current(A)
MCTL35U047A175	47.0	0.520	1.75
MCTL35U033A200	33.0	0.375	2.00
MCTL35U022A250	22.0	0.250	2.50
MCTL35U010A350	10.0	0.150	3.50
MCTL35U005A450	5.60	0.090	4.50
MCTL35U003A550	3.30	0.050	5.50
MCTL35U001A700	1.50	0.030	7.00



Welcome customized.  
 Dimension in mm  
 Tolerance: ±0.03

