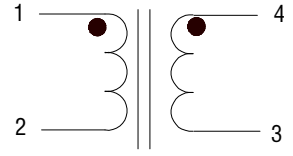


MCT Case Potting 28C Series
Common Mode Choke
Standard Winding

CONTENTS

MCT Case Potting Series Common Mode Choke Standard Winding.

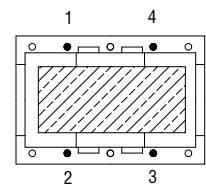
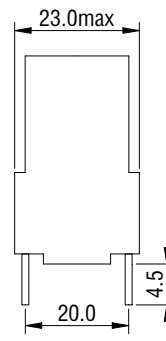
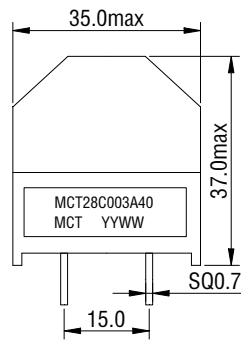
1. Compact and light weight
2. Testing frequency:1KHz/0.25V
3. Operating temperature:-40°C~+105°C



Typical electrical parameter

MCT Part No.	Inductance(mH) min	DC Resistance(Ω)max	Rated Current(A)
MCT28C033A12	33.0	0.45	1.2
MCT28C025A14	25.0	0.35	1.4
MCT28C018A17	18.0	0.25	1.7
MCT28C010A20	10.0	0.15	2.0
MCT28C006A25	6.80	0.10	2.5
MCT28C003A40	3.30	0.05	4.0
MCT28C001A60	1.80	0.03	6.0
MCT28C001A80	1.00	0.015	8.0

Welcome customized.
Dimension in mm
Tolerance: ± 0.03



Bottom view