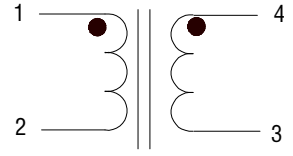


MCT Case Potting 31C Series  
Common Mode Choke  
Standard Winding

## CONTENTS

MCT Case Potting Series Common Mode Choke Standard Winding.

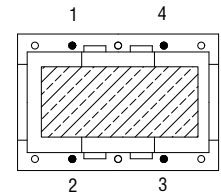
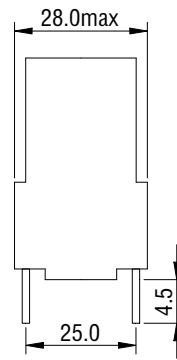
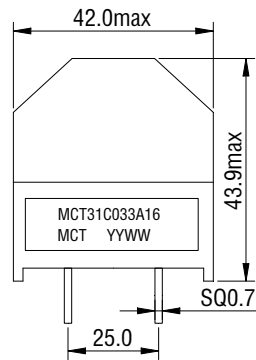
1. Compact and light weight
2. Testing frequency:1KHz/0.25V
- 3.Operating temperature:-40°C~+105°C



## Typical electrical parameter

MCT Part No.	Inductance(mH) min	DC Resistance( $\Omega$ )max	Rated Current(A)
MCT31C033A16	33.0	0.35	1.6
MCT31C025A20	25.0	0.25	2.0
MCT31C018A25	18.0	0.20	2.5
MCT31C010A30	10.0	0.13	3.0
MCT31C006A40	6.80	0.08	4.0
MCT31C003A60	3.30	0.04	6.0
MCT31C001A80	1.80	0.02	8.0
MCT31C001AA0	1.00	0.01	10.0

Welcome customized.  
 Dimension in mm  
 Tolerance:±0.03



Bottom view